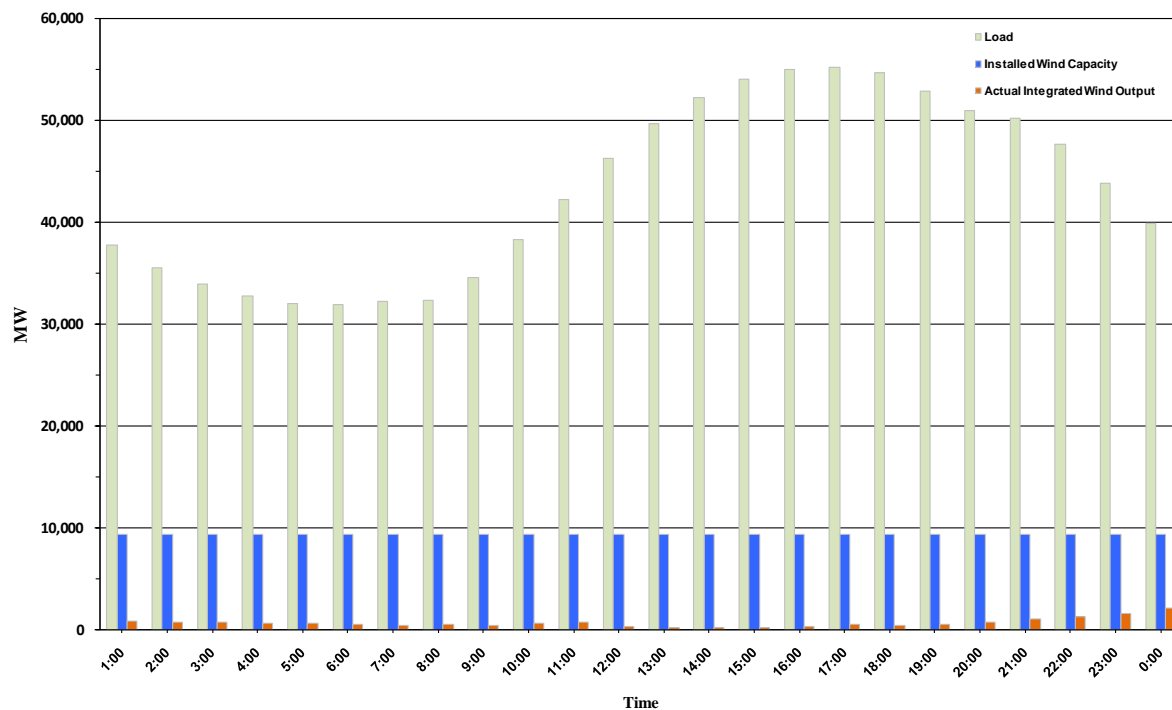




ERCOT Grid Operations Wind Penetration Report: 09/12/10

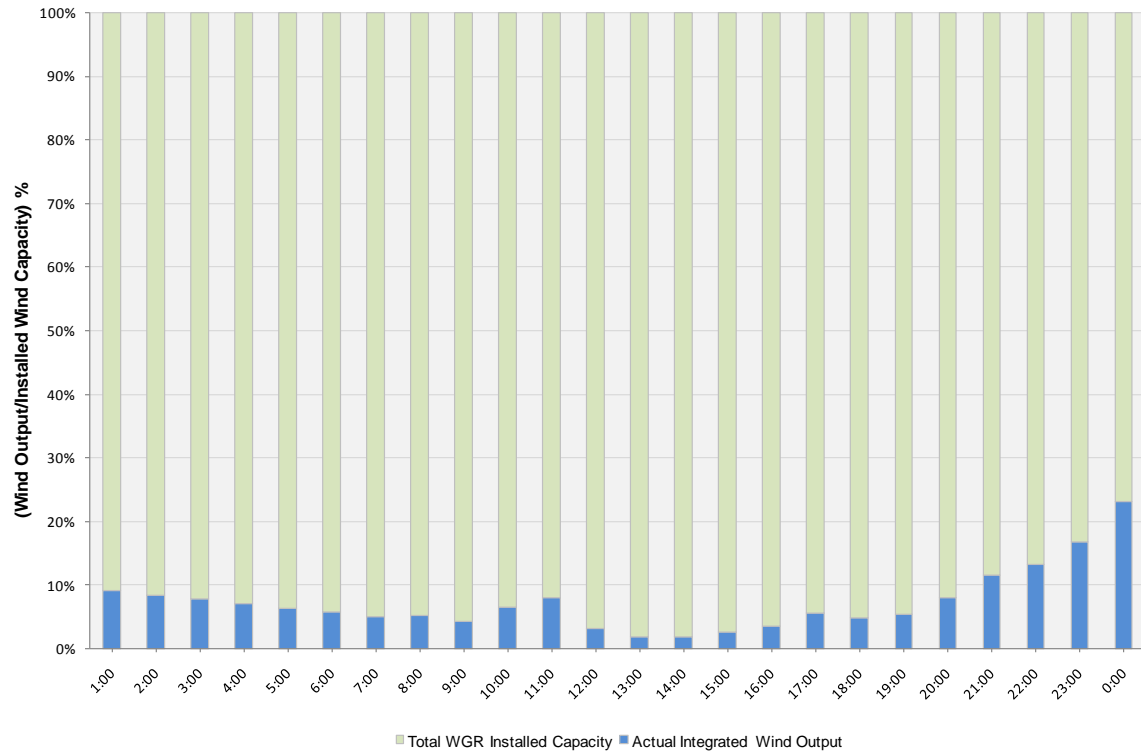
| | |
|----------------------|-----------|
| Peak Load | 55,263 MW |
| Load Peak Hour | 17 |
| Wind Record 06/12/10 | 7016 MW |
| Max Wind value | 2528 MW |
| Wind Peak Hour | 23:59:56 |
| Wind Penetration % | 6.62 |

Hourly Average Actual Load vs. Actual Wind Output
09-12-2010

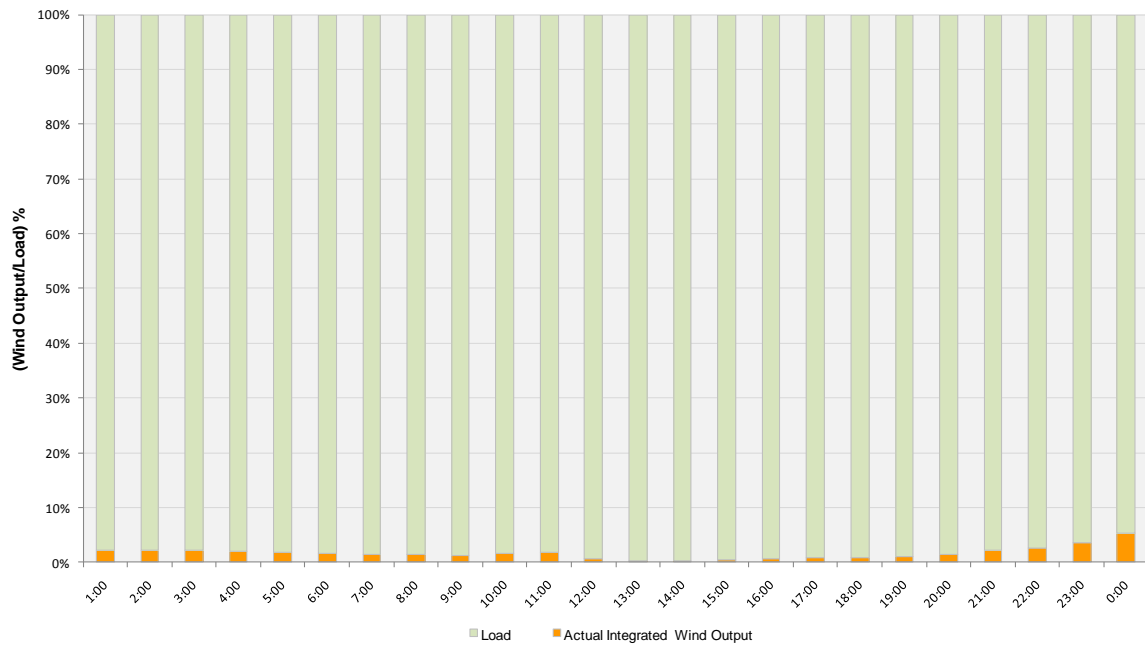




Actual Wind Output as a Percentage of the Total Installed Wind Capacity
09-12-2010



Actual Wind Output as a Percentage of the ERCOT Load
09-12-2010





ERCOT Load vs. Actual Wind Output 09/05/10 - 09/12/10

